

Frog Welcome

by Lori Cagle

The Artist's Club



Frog Welcome

By Sharon Cook

****Note:** there is no line drawing included with this pattern – all of the details are embossed on the resin surface.**

Palette:

DecoArt Patio Paints

Bright Lime Green #14303

Daisy Cream #14310

Geranium Red #14317

Holly Berry #14318

Pinecone Brown #14329

Sprout Green #14334

Cloud White #14309

Fiesta Yellow #14315

Grey Skies #14353

Orange Poppy #14357

Pumpkin #14345

Wrought Iron Black #14344

Surface:

Frog Welcome #80770

Misc. Supplies:

Patio Paint Clear Coat, 2 oz. #14308

Brushes:

Papillon by the Artist's Club

Angular Shader, size 1/8" #20108; size 1/4" #20109;
size 3/8" #20110

Script Liner, size 1 #20141

Highlighter Set #20173

Deerfoot Set #20167

Preparation:

There is no preparation necessary. Any slight imperfections can be lightly sanded. Wipe with a damp cloth to remove sanding dust.

Painting Instructions:

FROG – Basecoat the frog with Bright Lime Green. Shade with Sprout Green. Basecoat the eyes with Cloud White. Basecoat the pupils with Wrought Iron Black. Add a “C” stroke and dot of Cloud White in each pupil. Lightly stipple Sprout Green spots above the mouth. Place small dots on the area above the mouth; elbows & knees with Sprout Green. Basecoat the spots on the body with Pumpkin. Shade around the spots with Orange Poppy & stipple Fiesta Yellow in the center of each. Add thin plaid lines with Orange Poppy and Cloud White.
BASE – Basecoat the outside of the base with Grey

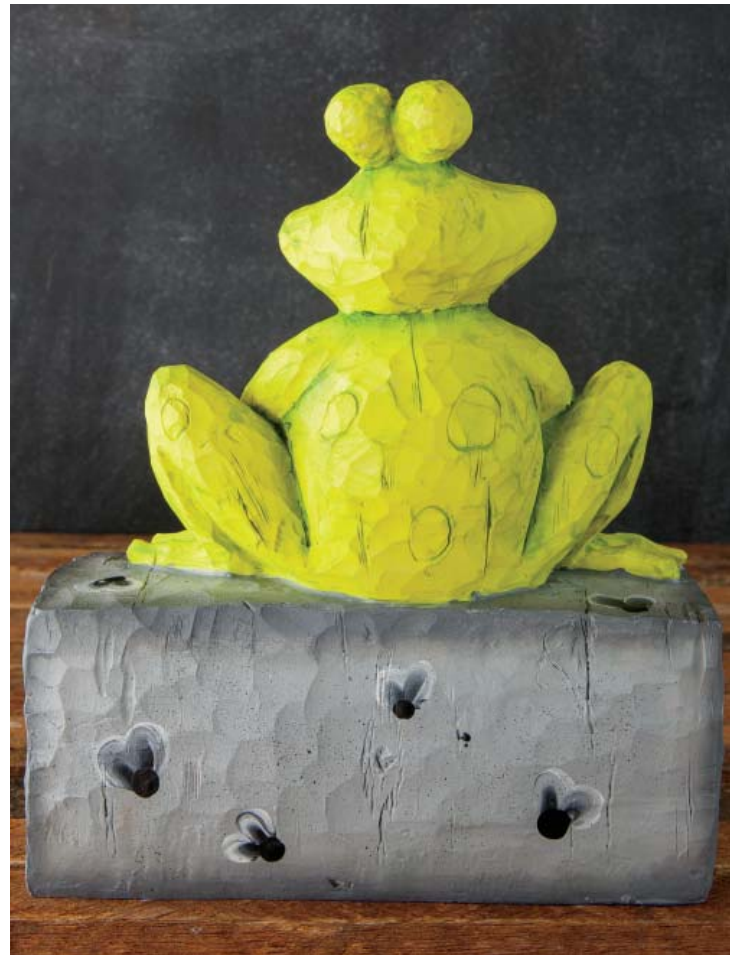


Skies. Shade the edges of the base with a brush mix of Grey Skies + Wrought Iron Black. Double-load the 1/4" Angular Shader with Cloud White on the tip and Wrought Iron Black on the bottom and float 2 "C" strokes for the bug wings. Add a brush end dot of Wrought Iron Black to the bottom of each set of wings.

SIGN – Basecoat the inner sign with Daisy Cream. Shade around the outer edge and pull some grain lines with Pinecone Brown. Add a few bugs on the sign front using the same method as above, if desired. Basecoat the "frame" of the sign with Geranium Red. Shade around the outer edge with a brush mix of Holly Berry + Wrought Iron Black. Basecoat the checks with Wrought Iron Black. Fill in the lettering with Wrought Iron Black.

Finishing:

Finish with a couple coats of Patio Paint Clear Coat – allow to dry well between coats.





Copyright 2015 by Lori Cagle and Crafts Americana Group, Inc.
All Rights Reserved. #331901

No. 

© Artist's Club®. All rights reserved. For private, non-commercial use only. Please see our web site for terms of use.